

Robert Schumann

Symphony No 2 in C Major, Opus 61

Horn 1 in F

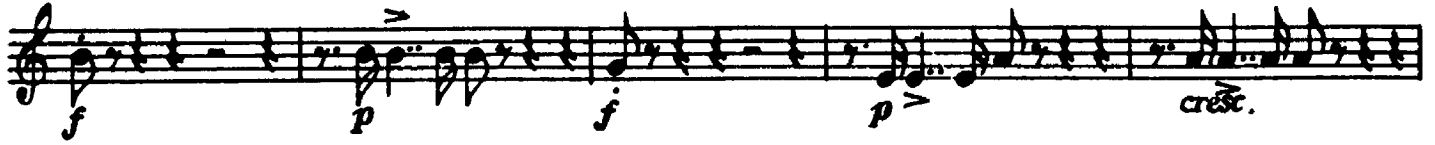
Robert Schumann
Symphony No. 2 in C Major, Op. 61

Horn I in F

Sostenuto assai $\text{♩} = 70$



A Un poco più vivace



più e più string.



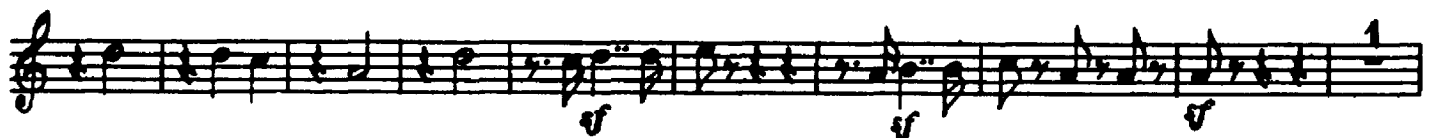
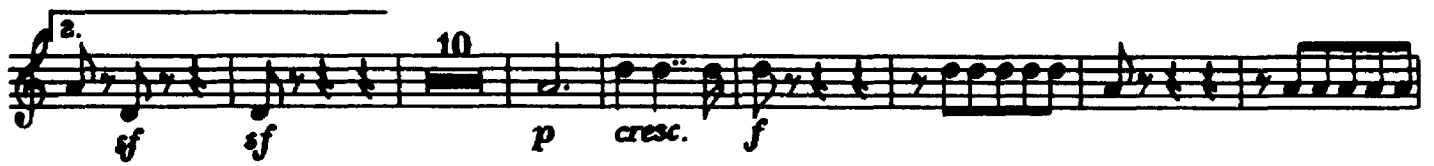
Allegro vivace $\text{♩} = 144$



B



Horn I in F



Schumann — Symphony No. 2 in C Major

4

Horn I in F

f *f* *sf* *sf*

E Solo 1 2 3 4 5 6 7 *sf* *sf* *sf* *p* *cresc.*

8 9 10 11 12 13 14 15 16 17 18

F *f* *p* *f* *p* *cresc.* *al* *ff* *sf* *sf*

G *sf* *sf*

f *p*

Horn I in F

cresc. *sfz* *cresc.*

f

H *sf* *sf*

con fuoco *sf* *sf* *sf* *sf* *cresc.* *f*

f *sf* *sf* *sf* *sf* *sf* *sfz*

f *sf*

I

f *f* *sf* *sf* *f* *sempre forte*

sf *sf* *sf* *sf* *sf* *sf*

Schumann — Symphony No. 2 in C Major

SCHERZO

Horn I in F

Allegro vivace ♩ : 144

mf *cresc.*

f *p*

a tempo *poco rit.* *f* *p*

K *f* *f*

cresc.

a tempo *poco rit.* *f* *p cresc.*

f *f* *sf* *p*

cresc.

sfz *p*

Trio I *p*

Horn I in F

12 1. 2. *a tempo*
p *rit.* *pp* *f*

poco rit.

a tempo
fp *f*

13 1. *a tempo*
p *ritard.* *cresc. f*

L *f*

p

1 1. *a tempo*
poco rit. *f* *p cresc.*

f *sf* *p cresc.*

f

f

f

Trio II M
14 25 2 15
p *cresc. mf*

Schumann — Symphony No. 2 in C Major

8

Horn I in F

mf = p mf = p mf = p cresc. mf

cresc. f

p poco rit. a tempo

f p cresc. f f

sf p cresc. f

Coda

sempre forte

ff

Horn I in F

Adagio espressivo $\text{♩} = 76$

Solo

p cresc.

ten. *p* *pp*

fp *sfp* *p*

fp *sfp* *p*

p *poco*

a poco cresc.

p *dim.* *p*

p *f* *p*

sfp *p*

poco a poco cresc.

p *dim.* *ten.* *p*

Schumann — Symphony No. 2 in C Major

10

Horn I in F

Allegro molto vivace $\text{♩} = 170$

f *sf* *sf* *più sf* *sf*

P *p* *p dolce* *cresc.* *mf* *cresc.*

Schumann — Symphony No. 2 in C Major

12

Horn I in F

The musical score for Horn I in F consists of ten staves of music. The first staff begins with a *p* dynamic and includes markings for *p cresc.*, *p dolce*, and *p*. It features a triplet of eighth notes and a triplet of quarter notes. The second staff has a *fp* dynamic and a measure rest of 16 measures. The third staff includes *f* and *p* dynamics and a measure rest of 4 measures. The fourth staff starts with *p* and includes a triplet of eighth notes and a measure rest of 27 measures. The fifth staff contains a section marked *S*. The sixth staff begins with *p*. The seventh staff has a *cresc.* marking and a measure rest of 2 measures. The eighth staff includes a *fp* dynamic and a *cresc.* marking, with a measure rest of 15 measures. The ninth staff has a *cresc.* marking and a measure rest of 5 measures. The tenth staff starts with *f*, *ff*, and *sfz* dynamics, followed by a *p* dynamic and a *cresc.* marking, with a measure rest of 39 measures.

Horn I in F

sempre cresc. *sempre cresc.*

più forte *f* *con fuoco*

più f

ff *p*

cresc.

cresc. al - - ff

ff *ff* *ff* *ff*