

Max

BRUCH

(1838 - 1920)

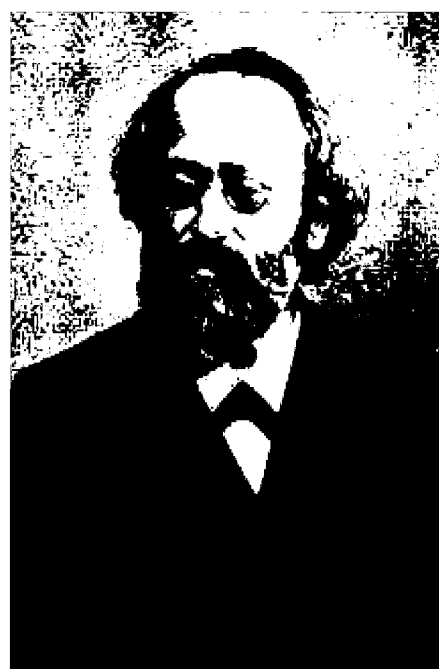
*Concerto for Clarinet,
Viola and Orchestra
Opus 88*

Concerto for Clarinet, Viola and Orchestra, Opus 88

by Max Bruch

Opus 88 offers both player and listener a lovely intimate conversation between two alto instruments. Bruch's clarinetist son Max Felix must have been enchanted to receive this tunefully rich and lusciously romantic composition from his father, replete with folk structures drawn from earlier suites. From the opening arpeggios of the first movement to the final allegro molto triplets, one is awestruck by the breathtaking beauty of the work and a sense of wonder that it is not performed more often. The composer was 73 when it was first performed in 1911 to, some say, a hostile audience more sympathetic with the experiments of Stravinsky and Scriabin than with the romanticism of Mendelssohn. That Bruch's style may not have changed much from his works composed forty years before ought not to matter a whit to the lover of soulfully intense musical companionship at its best. The composer's instrumentation progresses from fourteen to twenty-one accompanying voices through the three movements, finally boasting a full complement of woodwinds, four French horns and two trumpets plus strings and percussion. The parts available for this offering are listed below.

Instrument	Movement		
	1	2	3
Flute	1	1,2	1,2
Oboe	1	1,2	1,2
English Horn	x	1	1
A Clarinet*	1,2	1,2	1,2
Bassoon	1,2	1,2	1,2
E Horn†	1,2	1,2	1,2,3,4
E Trumpet‡	x	1,2	1,2
Timpani	1	1	1
Violin	1,2	1,2	1,2
Viola	1	1	1
Cello	1	1	1
Contrabass	1	1	1
Solo A Clarinet	1	1	1
Solo Viola	1	1	1



Max Bruch.

*Optional Bb Clarinet parts

†Optional F Horn parts

‡Optional Bb Trumpet parts

I thank the Universitäts-und Stadtbibliothek Köln for having prepared a microfiche of the autograph of this work from which my first transcription was prepared. I am indebted to Ms. Monica Cuneo of Oxford, UK, for having devoted a significant amount of time proofreading the result so as to correct corruptions which occurred in deciphering the composer's one-hundred-year-old autograph. Ms. Cuneo found more than four hundred errors in notes of accompanying instruments, the result of near invisible staff lines which had faded during the last century. This second edition is much improved over the first attempt. At this writing the music notation and MIDI files are available for downloading and your playing pleasure at

<http://www.csudh.edu/oliver/clarmusi/clarmusi.htm>

Happy playing, all!

Oliver Seely
Lakewood, California
January 31, 2011

Concerto for Clarinet, Viola and Orchestra, Opus 88

I

Max Bruch (1838 - 1920)

Andante con moto (♩ = 70)

Flute

Oboe

A Clarinet 1

A Clarinet 2

Bassoon 1

Bassoon 2

E Horn 1

F Horn 2

Percussion

Timpani

Violin 1

Violin 2

Viola

Solo A Clarinet

Solo Viola

Cello

Low Strings

Contrabass

f

p

sfz

espr.

6

7

A

poco rit.

System 1: Six staves (three treble, three bass). The first two staves are empty. The third and fourth staves have rests. The fifth and sixth staves contain a melodic line starting with a half note, followed by quarter notes, and ending with a fermata. Dynamics include *p* and *poco rit.*

A

poco rit.

System 2: Six staves. The first two staves are empty. The third and fourth staves have rests. The fifth and sixth staves contain a melodic line starting with a half note, followed by quarter notes, and ending with a fermata. Dynamics include *p* and *poco rit.*

A

poco rit.

System 3: Six staves. The first two staves contain rhythmic accompaniment with *sfz* dynamics. The third and fourth staves contain rhythmic accompaniment with *sfz* dynamics. The fifth and sixth staves contain a melodic line with *un poco string.* and *sfz* dynamics. Dynamics include *sfz*, *un poco string.*, *sfz*, and *poco rit.*

A

poco rit.

System 4: Six staves. The first two staves contain rhythmic accompaniment with *f* dynamics. The third and fourth staves contain rhythmic accompaniment with *f* dynamics. The fifth and sixth staves contain a melodic line with *f* and *f* arco dynamics. Dynamics include *f*, *f* arco, and *poco rit.*

19

19

19

19

19

19

19

19

19

19

19

19

19

19

19

19

19

19

19

19

19

19

19

19

19

19

19

19

19

19

19

19

19

19

19

19

19

19

19

19

19

19

19

19

19

19

19

19

19

19

19

19

19

19

19

19

19

19

19

19

19

19

19

19

19

19

19

19

19

19

19

19

19

19

19

19

19

19

19

19

19

19

19

19

19

19

19

19

19

19

19

19

19

19

19

19

19

19

19

19

19

19

19

19

19

19

19

19

19

19

19

19

19

19

19

19

19

19

19

19

19

19

19

19

19

19

19

19

19

19

19

19

19

19

19

19

19

19

19

19

19

19

19

19

19

19

19

19

19

19

19

19

19

19

19

19

19

19

19

19

19

19

19

19

19

19

19

19

19

19

19

19

19

19

19

19

19

19

19

19

19

19

19

19

19

19

19

19

19

19

19

19

19

19

19

19

19

19

19

19

19

19

19

19

19

19

19

19

19

19

19

19

19

19

19

19

19

19

19

19

19

19

19

19

19

19

19

19

19

19

19

19

19

19

19

19

19

19

19

19

19

19

19

19

19

19

19

19

19

19

19

19

19

19

19

19

19

19

19

19

19

19

19

19

19

19

<

C

System 1: Treble clef, key signature of one sharp (F#), and common time signature. It contains five staves. The first four staves are mostly empty. The fifth staff (bass clef) contains musical notation starting at measure 29, including dynamics *p* and *pp*.

C

System 2: Treble clef, key signature of one flat (Bb), and common time signature. It contains five staves, all of which are empty.

C

System 3: Treble clef, key signature of one sharp (F#), and common time signature. It contains five staves. The first two staves have musical notation starting at measure 29, with dynamics *pp*. The third staff (bass clef) has musical notation starting at measure 29. The fourth staff has musical notation starting at measure 29, with dynamics *p*, *dolce*, *pp*, *cresc.*, and *espr.*. The fifth staff (bass clef) has musical notation starting at measure 29, with dynamics *p* and *f*.

C

System 4: Bass clef, key signature of one sharp (F#), and common time signature. It contains two staves. The top staff has musical notation starting at measure 29, with dynamics *pp* and *p*. The bottom staff has musical notation starting at measure 29, with dynamics *p*.

D

48 *mf* *cresc.* *f*

48 *mf* *cresc.* *f*

48 *mf* *cresc.* *f*

48 *mf* *cresc.* *f*

48 *mf* *cresc.* *f*

D

48 *mf* *cresc.* *f*

48 *mf* *cresc.* *f*

48 *mf* *cresc.* *f*

D

48 *mf* *cresc.* *f*

48 *mf* *cresc.* *f*

48 *mf* *cresc.* *f*

48 *mf* *cresc.* *f*

Tutti

48 *p*

Tutti

48 *p*

D

48 *pp* *mf* *f*

48 *pp* *mf* *f*

53

espr.

sfz

53

sfz

53

espr.

espr.

sfz

53

sfz

53

sfz

53

sfz

58 **E**

pp

58 **E**

pp

58 **E**

pp

pizz.

58

pp

Solo

cresc.

58 **E**

pp

This musical score page contains measures 62 through 71 of a piece in D major. The score is arranged in two systems of four staves each. The first system includes the first two staves of each system, and the second system includes the last two staves of each system. The music features a variety of dynamics and articulations, including *pp*, *p*, *ppp*, *arco*, *pizz.*, *cresc.*, *f*, and *espr.*. The first system shows a gradual build-up of sound with *pp* and *ppp* markings. The second system features a more active texture with *arco* and *pizz.* markings, and a dynamic range from *p* to *f*. The piece concludes with a *pizz.* marking in the final measure.

67 **F**

67 *pp* *cresc.*

67 **F** *pp*

67 *pp* *cresc.*

67 *pp*

67 *pp*

67 **F**

67 *pp* *cresc.*

67 *p* *cresc.*

67 *pp* *p* *cresc.*

67 *pp* *cresc.*

67 *pp* *cresc.*

67 **F**

67 *pp* *cresc.*

67 *pp* *arco* *cresc.*

Musical score for a string quartet, measures 73-80. The score is written for four staves: Violin I, Violin II, Viola, and Cello/Double Bass. The key signature is three sharps (F#, C#, G#) and the time signature is 4/4. The score includes various dynamics and performance instructions:

- Measures 73-74: *f* (forte) in the lower strings, transitioning to *p* (piano).
- Measures 75-76: *p* (piano) throughout.
- Measure 77: *pp* (pianissimo) in the upper strings.
- Measures 78-79: *pp* (pianissimo) in the upper strings, *pizz.* (pizzicato) in the lower strings, and *arco* (arco) in the lower strings.
- Measure 80: *pp* (pianissimo) in the upper strings, *pizz.* (pizzicato) in the lower strings, and *arco* (arco) in the lower strings.

Performance instructions include *espr.* (espressivo) and *cresc.* (crescendo). The score also features triplets in the Cello/Double Bass part in measures 75-79.

H a tempo

91 a tempo

91 a tempo

91 a tempo

91 a tempo

91 a tempo

91 a tempo

p

H a tempo

91 a tempo

91 a tempo

91 a tempo

p

sfz

H a tempo

91 a tempo

91 a tempo

91 a tempo

pizz. *p*

pizz. *p*

pizz. *p*

arco

pp

a tempo

91 a tempo

91 a tempo

cresc.

espr.

espr.

sfz

cresc.

H a tempo

91 a tempo

91 a tempo

pizz. *p*

cresc.

pizz. *p*

sfz

J

System 1: Five staves (treble and bass clefs) with rests. Measure numbers 96 are indicated at the start of each staff.

J

System 2: Five staves. Measures 96-98. Dynamics include *p*. A slur is present in the second staff.

J

System 3: Five staves. Measures 96-98. Dynamics include *p*. Labels include *arco* and *pizz.*

System 4: Two staves. Measures 96-98. Dynamics include *p*, *f*, and *espr.*

J

System 5: Five staves. Measures 96-98. Dynamics include *pp*, *arco*, *pizz.*, and *arco*.

This musical score page contains measures 101 through 104 for a string quartet. The score is arranged in two systems, each with four staves (Violin I, Violin II, Viola, and Cello/Double Bass). The key signature is one sharp (F#) and the time signature is 4/4. The first system (measures 101-103) features a Violin I melody starting with a *p* dynamic, followed by a *pp* dynamic. The Cello/Double Bass part has a *p* dynamic. The second system (measures 103-104) shows a Violin I melody with a *pp* dynamic, a Cello/Double Bass part with a *p* dynamic, and a Viola part with a *p* dynamic. The score includes various dynamics such as *p*, *pp*, *cresc.*, *f*, and *espr.*, as well as performance instructions like *pizz.*, *arco*, and *divisi*.

114 poco rit. **K** a tempo

114 poco rit. *pp* a tempo

114 poco rit. *pp* a tempo

114 poco rit. *pp* a tempo

114 poco rit. *pp* a tempo

114 *p* morendo *pp* *pp* a tempo

114 poco rit. **K** a tempo

114 poco rit. *pp* a tempo

114 poco rit. *pp* a tempo

114 poco rit. *pp* a tempo

114 morendo *pp* pizz.

114 poco rit. *pp* a tempo

114 poco rit. a tempo

114 poco rit. **K** a tempo

114 morendo *pp* pizz.

114 poco rit. *pp* a tempo

114 morendo *pp*

123 rit.

123 rit.

123 rit.

123 rit. *morendo*

123 rit.

Musical score system 1, measures 11-20. The system consists of eight staves. The first six staves are treble clefs with a key signature of one sharp (F#). The seventh and eighth staves are bass clefs with a key signature of one sharp (F#). All staves contain whole rests.

Musical score system 2, measures 21-30. The system consists of five staves. The first staff is a treble clef with a key signature of two flats (Bb, Eb). The second, third, and fourth staves are treble clefs with a key signature of two flats (Bb, Eb). The fifth staff is a bass clef with a key signature of two flats (Bb, Eb). The first staff contains a melodic line with a slur over three notes.

Musical score system 3, measures 31-40. The system consists of six staves. The first staff is a treble clef with a key signature of one sharp (F#). The second and third staves are a grand staff (treble and bass clefs) with a key signature of one sharp (F#). The fourth staff is a treble clef with a key signature of two flats (Bb, Eb). The fifth and sixth staves are a grand staff (treble and bass clefs) with a key signature of one sharp (F#). The first staff contains a melodic line with dynamics *pp* and *p*. The second and third staves contain accompaniment with dynamics *pp*. The fourth staff contains a melodic line with dynamics *cresc.* and *p*. The fifth and sixth staves contain accompaniment with dynamics *p* and *pp*. The word *tranquillo* is written above the fifth staff.

A

A

A

31

p dolce

p

p

31

p

31

p

p

cresc.

p

cresc.

p

pizz.

pizz.

B

B

B

p *cresc.* *f* *espr.* *sfz* *arco43* *pizz.* *arco44* *sfz*

C

Musical score system 1, measures 47-56. It consists of seven staves. The first six staves are for a string quartet (Violin I, Violin II, Viola, Violoncello I, Violoncello II, Double Bass). The seventh staff is for the Double Bass. The key signature is one sharp (F#). The first staff has a *pp* dynamic marking. The music is mostly rests, with some notes in the second staff.

C

Musical score system 2, measures 47-56. It consists of seven staves. The first six staves are for a string quartet. The seventh staff is for the Double Bass. The key signature is two flats (Bb, Eb). The first staff has a *p* dynamic marking. The music features melodic lines in the first and second staves.

C

Musical score system 3, measures 47-56. It consists of seven staves. The first six staves are for a string quartet. The seventh staff is for the Double Bass. The key signature is one sharp (F#). The first staff has a *p* dynamic marking. The music is more active, with many notes and slurs. Dynamics include *p*, *f*, *p*, *cresc.*, and *arco*. The word *pizz.* is written below the seventh staff.

58 a tempo **D**

poco rit. a tempo

poco rit. a tempo

p poco rit. a tempo

poco rit. a tempo

poco rit. a tempo

a tempo

poco rit. a tempo

poco rit. a tempo

p poco rit. a tempo

poco rit. a tempo

mf poco rit. a tempo **D**

mf poco rit. a tempo

poco rit. a tempo

poco rit. a tempo

poco rit. a tempo

poco rit. a tempo

poco rit. a tempo

a tempo **D**

poco rit. *p* arco41 a tempo

poco rit. *p* pizz. a tempo arco41

poco rit. *p* pizz. a tempo arco42

f dolce poco rit. a tempo **D**

f dolce poco rit. a tempo

p pizz. poco rit. a tempo **D**

p poco rit. a tempo arco43

p pizz. poco rit. a tempo arco44

This musical score page contains measures 69 through 78. It is written for a piano and consists of several systems of staves. The first system includes five staves, with the first four in treble clef and the fifth in bass clef. The second system includes five staves, with the first four in treble clef and the fifth in bass clef. The third system includes five staves, with the first four in treble clef and the fifth in bass clef. The fourth system includes five staves, with the first four in treble clef and the fifth in bass clef. The fifth system includes five staves, with the first four in treble clef and the fifth in bass clef. The sixth system includes five staves, with the first four in treble clef and the fifth in bass clef. The seventh system includes five staves, with the first four in treble clef and the fifth in bass clef. The eighth system includes five staves, with the first four in treble clef and the fifth in bass clef. The ninth system includes five staves, with the first four in treble clef and the fifth in bass clef. The tenth system includes five staves, with the first four in treble clef and the fifth in bass clef. The eleventh system includes five staves, with the first four in treble clef and the fifth in bass clef. The twelfth system includes five staves, with the first four in treble clef and the fifth in bass clef. The thirteenth system includes five staves, with the first four in treble clef and the fifth in bass clef. The fourteenth system includes five staves, with the first four in treble clef and the fifth in bass clef. The fifteenth system includes five staves, with the first four in treble clef and the fifth in bass clef. The sixteenth system includes five staves, with the first four in treble clef and the fifth in bass clef. The seventeenth system includes five staves, with the first four in treble clef and the fifth in bass clef. The eighteenth system includes five staves, with the first four in treble clef and the fifth in bass clef. The nineteenth system includes five staves, with the first four in treble clef and the fifth in bass clef. The twentieth system includes five staves, with the first four in treble clef and the fifth in bass clef. The score is characterized by intricate melodic patterns, often with slurs and accents, and a consistent use of the 'decresc.' (decrescendo) and 'p' (piano) markings.

E L'istesso tempo

L'istesso tempo *p* *pp*

L'istesso tempo *p*

L'istesso tempo

L'istesso tempo

L'istesso tempo *pp*

L'istesso tempo *p* *p*

L'istesso tempo *p*

L'istesso tempo *p* *p* *p*

L'istesso tempo *pp*

L'istesso tempo

E L'istesso tempo

L'istesso tempo *pp*

L'istesso tempo *pp*

L'istesso tempo *pp*

L'istesso tempo

L'istesso tempo *pp* *pp* *pp* *pp*

E L'istesso tempo

p pizz.

L'istesso tempo *p* pizz.

L'istesso tempo *p* pizz.

E L'istesso tempo

L'istesso tempo *p* *p* *p*

E L'istesso tempo

p pizz.

L'istesso tempo *p*

pizz.

Musical score for a string quartet, measures 96-105. The score includes parts for Violin I, Violin II, Viola, and Cello/Double Bass. The key signature is two sharps (D major or F# minor), and the time signature is 4/4.

The score is divided into two systems. The first system (measures 96-105) shows the Violin I and II parts, the Viola part, and the Cello/Double Bass part. The second system (measures 96-105) shows the Violin I and II parts, the Viola part, and the Cello/Double Bass part.

Key performance markings include:

- Violin I:** *p*, *cresc.*, *mf*, *f*
- Violin II:** *p*, *cresc.*, *mf*, *f*
- Viola:** *p*, *cresc.*, *f*
- Cello/Double Bass:** *p*, *arco42*, *cresc.*, *f*, *arco43*, *pizz.*, *arco44*, *cresc.*, *pizz.*, *sfz*

This musical score page contains measures 116 through 124. It features a string quartet (Violin I, Violin II, Viola, and Cello/Double Bass) and a piano accompaniment. The key signature is two sharps (D major or F# minor), and the time signature is 4/4. The score includes various dynamics such as *pp*, *p*, *mf*, and *f*, along with performance instructions like *cresc.*, *arco42*, *pizz.*, and *un poco cresc.*. The piano part includes a section marked *arco42* starting in measure 121. The string parts have several long, sustained notes with phrasing slurs.

This musical score page contains measures 125 through 140. It features a string quartet (Violin I, Violin II, Viola, and Cello/Double Bass) and a piano accompaniment. The key signature is D major (two sharps), and the time signature is 4/4. The score includes various dynamics such as *p* (piano), *mf* (mezzo-forte), *f* (forte), and *sfz* (sforzando), along with performance directions like *cresc.* (crescendo), *pizz.* (pizzicato), and *arco* (arco). The piano part includes specific markings for the right and left hands, such as *arco41* and *arco43*. The string parts show a variety of articulations, including slurs, accents, and dynamic markings.

G

Musical score system 1, measures 135-136. It consists of six staves. The first two staves are treble clef, and the last two are bass clef. The middle two staves are also treble clef. The key signature has two sharps (F# and C#). The music features long, sustained notes with dynamic markings of *p* (piano) and *pp* (pianissimo).

G

Musical score system 2, measures 135-136. It consists of six staves. The first two staves are treble clef, and the last two are bass clef. The middle two staves are also treble clef. The key signature has two flats (Bb and Eb). The music features long, sustained notes with dynamic markings of *p* (piano) and *pp* (pianissimo).

G

Musical score system 3, measures 135-136. It consists of six staves. The first two staves are treble clef, and the last two are bass clef. The middle two staves are also treble clef. The key signature has two sharps (F# and C#). The music includes dynamic markings of *pizz.* (pizzicato), *p* (piano), *pp* (pianissimo), and *arco41* (arco, 41).

G

Musical score system 4, measures 135-136. It consists of six staves. The first two staves are treble clef, and the last two are bass clef. The middle two staves are also treble clef. The key signature has two sharps (F# and C#). The music includes dynamic markings of *decresc.* (decrescendo), *p* (piano), *pp* (pianissimo), and *morendo* (morendo).

155 **H**

155

155

155

155

155

155

155

155

155 **H**

155

155

155

155

155

155

155

155

155 **H**

155

155

155

pp

pp

pp

155 **H**

155

155

p

p *cresc.*

155 **H**

155

155

pp

pp *p*

165 **J**

165 *p*

165 *I p*

165 **J**

165 *p*

165 **J**

165 *p*

165 *p*

165 **J**

165 *f*

165 *p*

165 *cresc.*

L

Musical score system 1, measures 201-205. It features a piano introduction with dynamics *p* and *pp*. The system includes staves for Violin I, Violin II, Viola, Cello, and Double Bass. A square box labeled 'L' is positioned above the first measure.

L

Musical score system 2, measures 201-205. It continues the piano introduction with dynamics *p* and *pp*. The system includes staves for Violin I, Violin II, Viola, Cello, and Double Bass. A square box labeled 'L' is positioned above the first measure.

L

Musical score system 3, measures 201-205. It features a more active piano introduction with dynamics *p* and *pizz.*. The system includes staves for Violin I, Violin II, Viola, Cello, and Double Bass. A square box labeled 'L' is positioned above the first measure.

L

Musical score system 4, measures 201-205. It features a piano introduction with dynamics *p* and *mf*. The system includes staves for Violin I, Violin II, Viola, Cello, and Double Bass. A square box labeled 'L' is positioned above the first measure. Performance markings include *dolce*, *poco rit.*, *a tempo*, and *mf*.

211

p

p

pp

p

211

pp

pp

pp

pp

211

pp

pp

pp

p

pp

p

pp

pp

Concerto for Clarinet, Viola and Orchestra, Opus 88

III

Max Bruch (1838 - 1920)

1 Allegro molto (♩ = 92)

Flute 1
Flute 2
Oboe 1
Oboe 2
English Horn
A Clarinet 1
A Clarinet 2
Bassoon 1
Bassoon 2
E Horn 1
E Horn 2
E Horn 3
E Horn 4
E Trumpet 1
E Trumpet 2
Timpani in E and B
Violin 1
Violin 2
Viola
Solo A Clarinet
Solo Viola
Cello
Contrabass

This page of musical score is for a string quartet, consisting of four violins, four violas, and two cellos/contrabasses. The score is written in a key signature of three sharps (F#, C#, G#) and a common time signature (C). The music is divided into two systems. The first system contains 10 measures, and the second system contains 10 measures. The notation includes various rhythmic values, including eighth and sixteenth notes, and rests. Dynamic markings such as *f* (forte) and *p* (piano) are used throughout. The score is arranged in a standard string quartet layout, with the first violin on the top staff, followed by the second violin, the first viola, the second viola, the first cello/contrabass, and the second cello/contrabass at the bottom. The page number 10 is visible in the top left corner.

Musical score for a piano piece, measures 31-40. The score is in G major (one sharp) and 4/4 time. It features multiple staves with various musical notations including slurs, accents, and dynamic markings such as *sfz* and *f*. The bottom section includes a grand staff with piano and bass clefs.

This musical score page contains measures 62 through 71. It features a piano part and a string section. The piano part includes a right-hand melody with triplets and a left-hand accompaniment. The string section consists of five staves (Violins I, Violins II, Violas, Cellos, and Double Basses). Dynamics include *p*, *sempre p*, and *pp*. A *cresc.* marking is present in the double bass line. The key signature has three sharps (F#, C#, G#) and the time signature is 4/4.

Musical score system 1, measures 105-114. All staves are empty.

Musical score system 2, measures 105-114. Measures 105-113 are empty. Measure 114 contains a single note in the first staff, marked *p*.

Musical score system 3, measures 105-114. This system contains the main musical notation with various performance instructions:

- Measure 105: *arco*
- Measure 106: *arco*
- Measure 107: *p*
- Measure 108: *pizz.*
- Measure 109: *arco*
- Measure 110: *sempre p e legg.*
- Measure 111: *pizz.*
- Measure 112: *espress.*
- Measure 113: *p*
- Measure 114: *p*

126 **D**

126

126 **D**

sempre pp e legg. *sfz*

126 **D**

pp grazioso *sempre p*

126

E

Musical score system 1, measures 140-147. The system consists of eight staves. The first six staves are treble clefs, and the last two are bass clefs. The key signature has three sharps (F#, C#, G#). The music is mostly rests. In measure 145, the bass clef staves have a melodic line starting with a piano (*p*) dynamic, moving to a pianissimo (*pp*) dynamic in measure 147.

Musical score system 2, measures 140-147. The system consists of eight staves. The first six staves are treble clefs, and the last two are bass clefs. The key signature has three sharps. In measure 145, the first two treble clef staves have a melodic line starting with a piano (*p*) dynamic, moving to a pianissimo (*pp*) dynamic in measure 147. The bass clef staves have rests.

E

Musical score system 3, measures 140-147. The system consists of eight staves. The first six staves are treble clefs, and the last two are bass clefs. The key signature has three sharps. In measure 145, the first two treble clef staves have a melodic line starting with a piano (*p*) dynamic, moving to a pianissimo (*pp*) dynamic in measure 147. The bass clef staves have rests.

Musical score system 1, measures 172-181. This system consists of ten staves, all of which are currently empty, indicating a section of the score that has not yet been written.

Musical score system 2, measures 172-181. This system contains musical notation for the first two staves. The top staff begins with a half note G4, followed by a quarter rest, and then a half note G4 with a *p* dynamic marking. The second staff begins with a half note G3, followed by a quarter rest, and then a half note G3 with a *p* dynamic marking. The remaining staves in this system are empty.

Musical score system 3, measures 172-181. This system contains musical notation for the first three staves. The top staff features a half note G4, a quarter rest, and then a series of eighth notes (A4, B4, C5, B4, A4) with a *pp* dynamic marking. The second staff features a half note G4, a quarter rest, and then a series of eighth notes (A4, B4, C5, B4, A4) with a *pp* dynamic marking. The third staff features a half note G3, a quarter rest, and then a series of eighth notes (A3, B3, C4, B3, A3) with a *pp* dynamic marking. A triplet of eighth notes (A3, B3, C4) is marked with a '3' and a slur.

Musical score system 4, measures 172-181. This system contains musical notation for the first two staves. The top staff begins with a half note G4, followed by a quarter rest, and then a half note G4 with a *p* dynamic marking. The second staff begins with a half note G3, followed by a quarter rest, and then a half note G3 with a *p* dynamic marking. The remaining staves in this system are empty.

Musical score system 5, measures 172-181. This system contains musical notation for the first two staves. The top staff begins with a half note G4, followed by a quarter rest, and then a half note G4 with a *p* dynamic marking. The second staff begins with a half note G3, followed by a quarter rest, and then a half note G3 with a *p* dynamic marking. The remaining staves in this system are empty.

Musical score for a piano piece, measures 205-214. The score is written for multiple staves, including a grand staff (treble and bass clefs) and several individual staves. The key signature is three sharps (F#, C#, G#) and the time signature is 4/4. The score features complex rhythmic patterns, including triplets and sixteenth notes. Dynamics include *sfz*, *f*, and *ff*. The score is divided into two systems, with measures 205-214 shown in the first system and measures 215-224 in the second system. The first system includes measures 205-214, and the second system includes measures 215-224. The score is written for a grand staff (treble and bass clefs) and several individual staves. The key signature is three sharps (F#, C#, G#) and the time signature is 4/4. The score features complex rhythmic patterns, including triplets and sixteenth notes. Dynamics include *sfz*, *f*, and *ff*. The score is divided into two systems, with measures 205-214 shown in the first system and measures 215-224 in the second system.

This page of a musical score, numbered 72, contains measures 215 through 224. The score is written for piano and orchestra. The piano part is in the lower staves, and the orchestra part is in the upper staves. The key signature is one sharp (F#), and the time signature is 4/4. The score features a variety of musical notations, including dynamics such as *f*, *sfz*, and *ff*, and articulations like accents and slurs. The piano part includes a section marked "In D & A" starting at measure 221. The orchestra part includes a section marked "ff" starting at measure 221. The score is divided into two systems, with the first system containing measures 215-220 and the second system containing measures 221-224. The piano part is written in a grand staff (treble and bass clefs), and the orchestra part is written in a grand staff (treble and bass clefs). The piano part includes a section marked "In D & A" starting at measure 221. The orchestra part includes a section marked "ff" starting at measure 221. The score is divided into two systems, with the first system containing measures 215-220 and the second system containing measures 221-224.

234 **H**

234

234

234

234

234 *p*

234 *p*

234 *p*

234 *p*

234 *p*

234

234

234

234

234

234

234

234 **H**

234 *p* arco

234 *p* sempre *p* pizz.

234 **H** *p* cresc. *p* tranquillo

234 *mf*

234 *p* pizz.

234 *p*

244 *p*

244

244 *p* *pp*

244 *p e legg.* *cresc.* *f*

244 *arco p* *pp*

Musical score for a string quartet, measures 277-284. The score includes parts for Violin I, Violin II, Viola, and Cello/Double Bass.

Violin I: Measures 277-284. Dynamics: *pp*, *p*, *pizz. p*. Performance instruction: *tranquillo*.

Violin II: Measures 277-284. Dynamics: *pp*, *p*, *pizz. p*.

Viola: Measures 277-284. Dynamics: *pp*, *p*, *pizz. p*.

Cello/Double Bass: Measures 277-284. Dynamics: *f*, *sfz*, *mf*, *p*. Performance instruction: *tranquillo*.

The score features various dynamics including *pp* (pianissimo), *p* (piano), *f* (forte), *sfz* (sforzando), and *mf* (mezzo-forte). It also includes articulations such as *pizz.* (pizzicato) and performance instructions like *tranquillo*.

This musical score page contains measures 297 through 301. It features a full string section with parts for Violin I, Violin II, Viola, Violoncello I, Violoncello II, Double Bass I, and Double Bass II. The key signature is three sharps (F#, C#, G#) and the time signature is 4/4. The score includes various dynamics such as *pp*, *f*, and *p*, as well as performance instructions like *arco* and *string*. Trills and triplets are indicated with '3' and brackets. The notation includes stems, beams, and slurs across the measures.

308

308

308

308

308

308

308

308

308

308

308

308

308

308

308

308

308

308

308

308

308

308

308

308

308

308

p

pizz.

p

pizz.

cresc.

cresc.

cresc.

308

308

1

2

3

4

308

308

3

3

3

3

3

308

308

308

p

pizz.

p

cresc.

cresc.

This page of a musical score contains measures 315 through 320. It features a large ensemble of instruments, including strings and woodwinds. The score is written in a key signature of three sharps (F#, C#, G#) and a common time signature (C). The music is characterized by a dynamic range from mezzo-forte (mf) to fortissimo (ff) and sforzando (sfz). A 'cresc.' (crescendo) marking is present in the string parts. A 'L' (Ligature) symbol is used in measures 319 and 320. The woodwind parts include flutes, oboes, and bassoons, with some parts marked 'arco' (arco). The string parts include violins, violas, cellos, and double basses. The score is arranged in a standard orchestral layout with multiple staves for each instrument family.

This page of musical notation contains 18 staves of music, likely for a piano. The notation is dense and includes various musical elements:

- Staff 1-10:** These staves feature complex rhythmic patterns, often with triplets and sixteenth notes. Dynamic markings such as *sfz* (sforzando) and *ff* (fortissimo) are used throughout. There are also several instances of slurs and accents.
- Staff 11-14:** These staves show a continuation of the rhythmic complexity, with some staves featuring a steady stream of sixteenth notes.
- Staff 15-18:** These staves include more complex rhythmic figures, including triplets and slurs, with dynamic markings like *sfz* and *ff*.

The page number 83 is located at the bottom center of the page.

This page of musical notation contains 18 staves, numbered 333 at the beginning of each line. The music is written in a key signature of three sharps (F#, C#, G#) and a 4/4 time signature. The notation includes various dynamics such as *ff* (fortissimo) and *sfz* (sforzando), as well as articulations like accents and slurs. The piece features a complex texture with multiple voices, including a prominent melodic line in the upper staves and a rhythmic accompaniment in the lower staves. The notation is dense, with many notes and rests, and includes some specific markings like *f* and *sfz* throughout. The page concludes with a double bar line and repeat signs at the end of the final staff.

This musical score page contains measures 354 through 358 for a string quartet. The score is written for four staves: Violin I, Violin II, Viola, and Cello/Double Bass. The key signature is three sharps (F#, C#, G#) and the time signature is 4/4. Measure 354 features a melodic line in the Violin I part with a fermata. Measures 355 and 356 show the Violin I and II parts with *pp* dynamics. Measure 357 includes a *sempre pp* marking and a triplet in the Violin I part. Measure 358 features a *pizz.* marking in the Cello/Double Bass part and an *arco* marking in the Viola part. The score concludes with a *cresc.* marking in the Cello/Double Bass part.

This musical score page contains measures 383 through 388. It features a grand staff with multiple staves for different instruments. The key signature is three sharps (F#, C#, G#) and the time signature is 3/4. The score includes various musical notations such as rests, notes, and slurs. Dynamic markings include *pp* (pianissimo) and *p* (piano). The word *sempre* is used to indicate a continuous or constant effect. There are also triplets marked with a '3' and a bracket. The bottom section of the page shows a more active piano part with rapid sixteenth-note passages and triplets.

This musical score page contains measures 396 through 400. It features a piano part and a string section. The piano part includes a right-hand melody with triplets and a left-hand accompaniment with sustained notes. The string section consists of five staves, with the first two playing a melodic line and the remaining three providing harmonic support. Dynamics range from *pp* to *f*. The key signature has three sharps (F#, C#, G#) and the time signature is 4/4.

Measures 396-400:

- Measure 396: Piano right hand begins with a triplet of eighth notes. String section enters with a melodic line.
- Measure 397: Continuation of the piano and string parts.
- Measure 398: Piano right hand features a triplet of eighth notes. String section continues.
- Measure 399: Piano right hand continues with a triplet. String section continues.
- Measure 400: Final measure of the system, ending with a fermata over the piano right hand.

This musical score page contains measures 418 through 432. It is written for a string quartet, with four staves for each instrument: Violin I, Violin II, Viola, and Cello/Double Bass. The key signature is three sharps (F#, C#, G#) and the time signature is 4/4. The score features several dynamic markings: *pp* (pianissimo), *p* (piano), *ppp* (pianississimo), *arco* (arco), *sempre p* (sempre piano), and *pizz.* (pizzicato). There are also performance instructions such as *sfz* (sforzando) and *ppp* with a fermata. The notation includes various note values, rests, and articulation marks. The page number 93 is centered at the bottom.

This musical score page contains measures 429 through 438. It is written for a string quartet, with four staves for each instrument: Violin I, Violin II, Viola, and Cello/Double Bass. The key signature is three sharps (F#, C#, G#) and the time signature is 4/4. The score includes various musical notations such as rests, notes, slurs, and dynamic markings. The first system (measures 429-432) shows mostly rests for the upper strings, with the lower strings playing a melodic line. The second system (measures 433-436) features more active parts for all instruments, with the lower strings playing a complex rhythmic pattern of triplets. The third system (measures 437-438) concludes the page with a final melodic phrase in the upper strings and a sustained bass line in the lower strings. Dynamic markings include *pp*, *p*, *cresc.*, *pizz.*, *arco pp*, *arco*, and *sfz*.

This page of musical score contains multiple staves for a piano concerto. The score is written in a key signature of three sharps (F#, C#, G#) and a 2/4 time signature. The music is characterized by dense, rhythmic textures, particularly in the right hand, which features rapid sixteenth-note passages and complex rhythmic patterns.

Key performance markings include:

- Dynamic markings:** *ff* (fortissimo) and *sfz* (sforzando) are used extensively throughout the score to indicate moments of high intensity.
- Performance instructions:** The instruction "Solo ad lib." appears above a section of the right hand, indicating a solo passage to be performed at the performer's discretion.
- Tempo/Character markings:** The marking "sempre *ff*" is present, suggesting a consistently strong and powerful performance.
- Structural markings:** Rehearsal marks numbered 1, 2, and 3 are placed above the right hand staff to delineate different sections of the music.

The score is divided into systems, with measures 448 and 449 clearly marked at the beginning of several staves. The notation includes various note values, rests, and articulation marks, all contributing to the intricate and powerful sound of the piece.

